



Xpansion Manager

Instruction manual

Ver. 1.10

Thank you for using our products.

This instruction manual is the installation and operation for "Xpansion Manager"

Please read and confirm this manual before using the software.

Agreement of using this software

- Agreeing to this permission condition, you permit the installation and use of Xpansion Manager (later calling this software).
- This software, the condition above being composed of executable file, dynamic-link library, configuration file, sample data file, which contains all and the library which is added in the future is included in this software.
- Kondo kagaku co.,ltd. holds total rights for the copyright for this software and the legal right, the design of the icon of the logo and the part and all files which are attached to this software.
- The this manual and this software is distributed for use with our company's product as free ware. Also, a copy is admitted when using our company's product.
- This document and software can not be the sold , leased or loaned without our approval. We do not recognize reverse engineering behavior and all alterations such as disassemble, opposite compilation and localization.
- After installation and use of this manual and software, results by using this software Kondo Kagaku co., Ltd does not owe responsibility of any results.
- Company name ,Product name in this document are each company's trade mark or logo mark. Do not use illustration and logo mark in this document without our approval.
- We might update the contents of this book without any notice for revise of the goods. We might also update the software without an advance announcement.

Prepare device for use (sold separate)

- **ICS USB Adapter HS (or ICS USB Adapter old type compatible)**

This is the interface for our products with a PC.

Please purchase from a shop that sells our products. (or ask Distributor)



- **Personal Computer**

This software supports Windows Vista, Windows 7, Windows 8, Windows 8.1, Windows10 (32/64bit)
The PC must support USB1.1 or 2.0.

* This software requires ".NET Framework 3.0" or later.

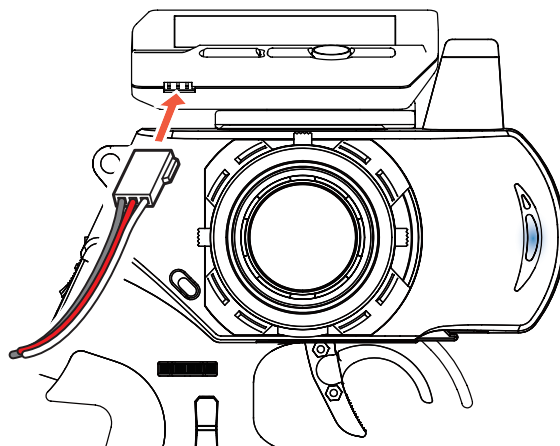
Please install the driver for ICS USB device to your PC. (Please read manual for ICS USB Adapter HS)

Connecting with Xpansion

Please use the cable that has ALL three wires. This is has a black, red and white wire connection.
Please note, if the wrong cable is used it does not operate normally.

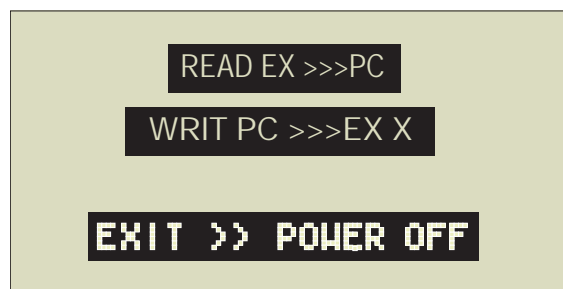
Please connect to the communication port
in the Xpansion and ICS USB Adapter in PC.

※DO NOT turn on EX-2/6.



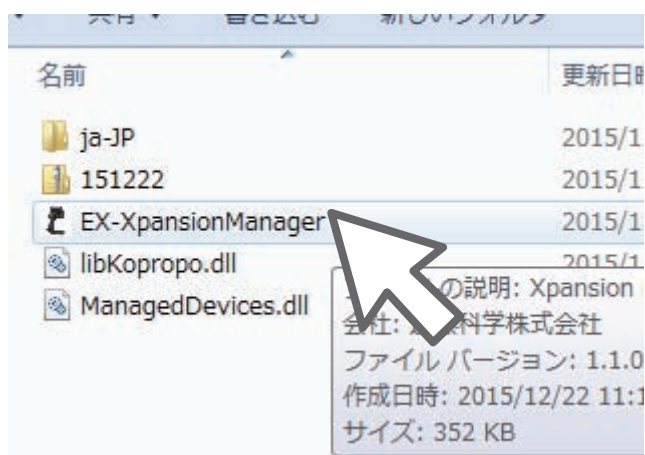
ICS communicate mode in the right figure
is displayed in LCD of Xpansion, operation
other than this becomes impossible.

Please disconnect cable when you want to
stop the ICS communication operation.



Starting of the Software

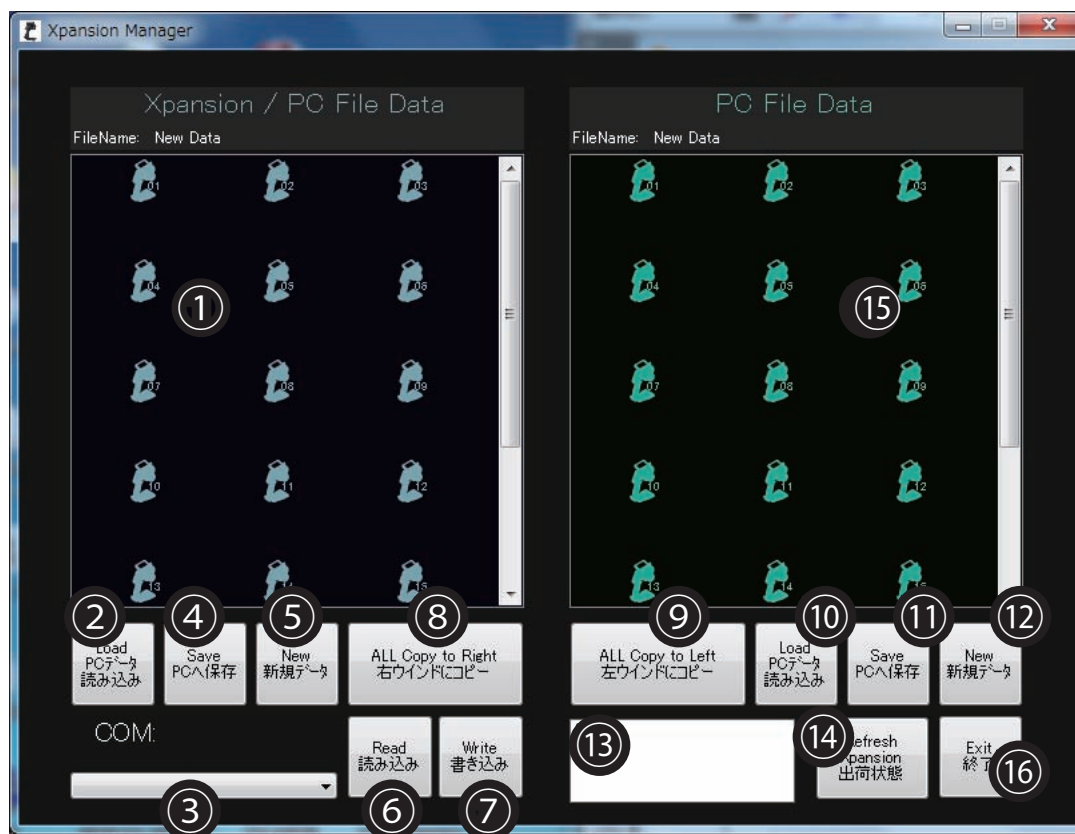
If you downloaded software from our site, You must extract a compressed file.
Please double click "Ex-XpansionManager.exe" in these files.



Operation explanation

Home Screen

When the software is activated, it is the screen which is initially displayed.



1/ Left data Window

Data from Xpansion are display this window.

2/ Load (use data from local disk in the PC)

Data from local disk in the PC is displayed to Left data window when clicking this button.

3/ COM

Please select the COM port which is used for the communication with the specified Xpansion.

4/ Save

Save data from left data window.

5/ New

The data of the left data window is initialized.

6/ Read

Read data from Xpansion is loaded to the left data window.

7/ Write

Write data to the Xpansion from the left data window.

8/ Data copy (To right window)

Data copy from the left data window to the right data window.

9/ Data copy (To left window)

Data copy from the right data window to the left data window

10/ Load

Display data to the right data window from a saved file.

11/ Save

Save data to a file from the right data window.

12/ New

The data of the right data window is initialized.

13/ Message

When the mouse pointer is over a button, an explanation is displayed.

14/ RefreshXpansion

All settings of the Xpansion are reset to the factory default settings.

15/ Right data window

Displaying the data which is loaded from the file, copying the data you use in order to create the combination of the new data.

16 / EXIT

Exit the Xpansion Manager software.

Communication port setting

You must connect "ICS USB Adapter HS" to your PC.

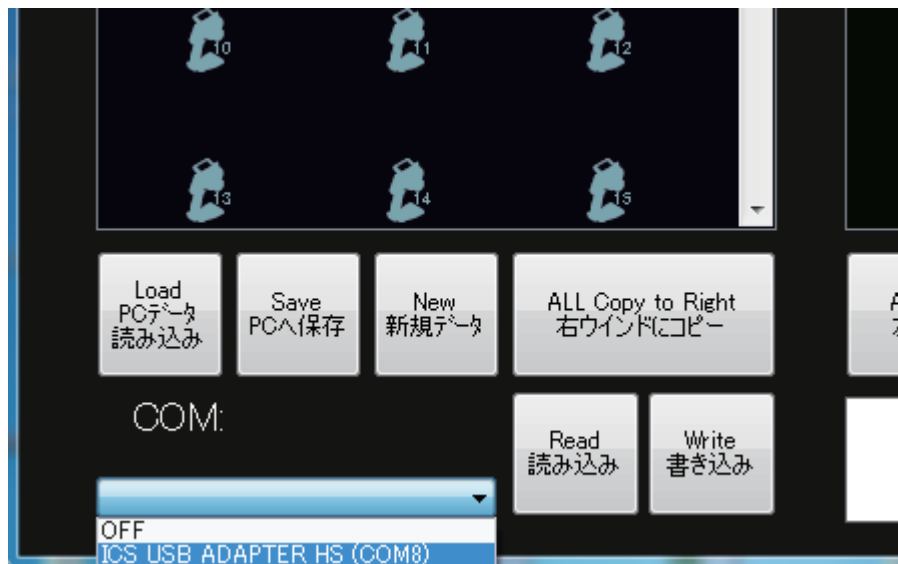
When you want to display the Xpansion data, but not necessary to operate the software.

Successful installation of "ICS USB adaptorHS" to your PC the displayed device name will appear on screen.

Please select the device to be used with the software.

If you can not find device name, please check the com port number on the device manager in your PC.

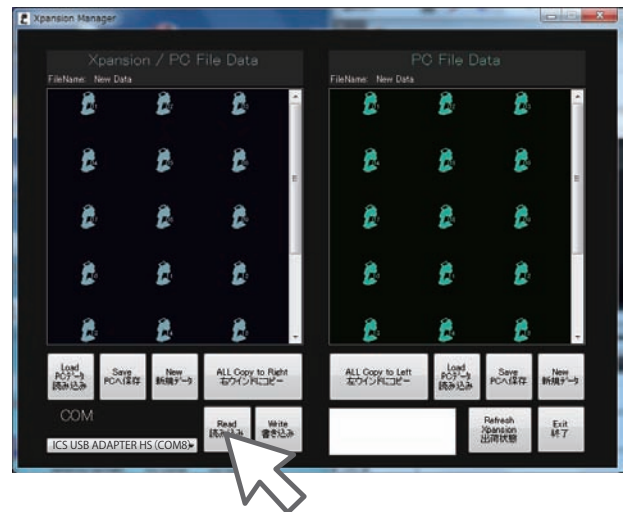
Select this number in software screen.



Receive data from Xpansion.

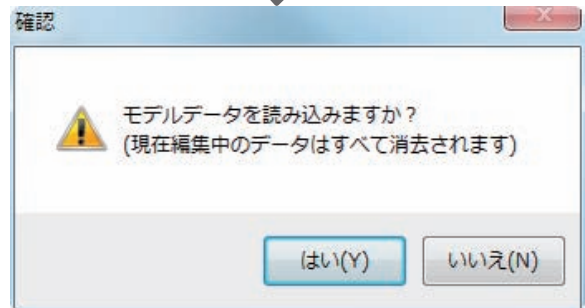
If personal computer and Xpansion are connected normally, it is possible to do the sending and receiving of the data, with ICS.

In order to receive the data, communication is done by clicking the Read button on the screen.

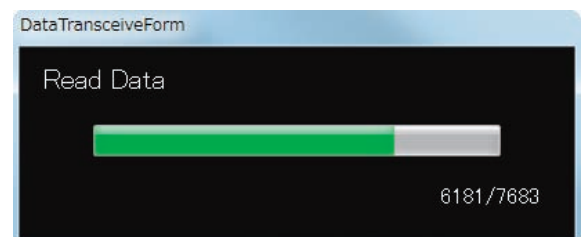


First, confirm that the screen like the one displayed to the right is shown.

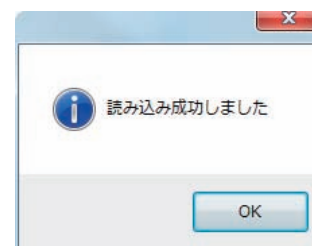
Data in the left data window is the current data. If you select "read " from Xpansion, data in the left data window will be overwritten by Xpansion data. If you need the data on the screen, please save the data or copy to the right data window.



If you select "YES", receive data is started and display screen shown to the right is displayed.



Dialog Box appear on the screen is shown when the reading of data is finished. Please click "OK" to close the dialog.



Send data to Xpansion

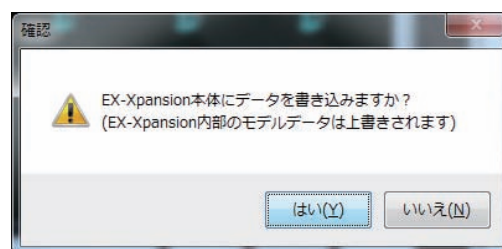
If personal computer and Xpansion are connected normally, it is possible to do the sending and receiving of the data, with ICS.

In order to transmit the data, communication is done by clicking the "write" button.

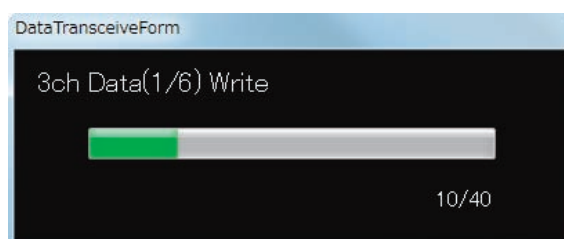


Dialog Box appears like the one shown to the right on the screen when you click the "write" button. Data in left window is written to the Xpansion. Be careful because the internal data has been overwritten.

If you select "YES", receive data is started and display screen shown to the right is displayed



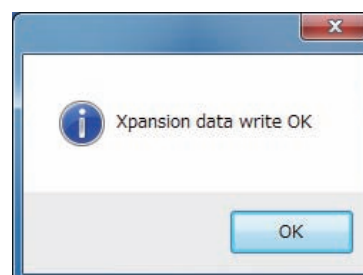
※The Sending of Data requires more time compared to Reading of data.



Dialog Box appear on the screen is shown when the sending of data is finished. Please click "OK" to close the dialog.

When connecting and communicating with the Xpansion, the above-mentioned ICS USB Adapter HS is necessary to be connected with the personal computer.

If you can not send data to Xpansion, please check the connection of the ICS USB adapter HS with your PC and retry it.



Operation in the Data windows.

Operation in the Data windows are the same for the left window and right window.
An example using the left data window will be used for a basic explanation.

- Load (Reading of data from PC)

Read data from PC and is displayed to the screen.

The data which can be accessed here becomes just the data format which is retained with this software.

- Save (Save Data to PC)

Save data to PC that is shown in the data window.

Save data is saved for only the data shown in either the left or right respective data window.
If you saved data from left window to PC, data of right data window is not saved to PC.
This same true when you save data from the right window to PC.

- New (New Data)

The data inside the data window is reset to the initial values.

If you need to reset the data, use this command.

If you send this data to Xpansion, it is same as data in the Xpansion factory settings.

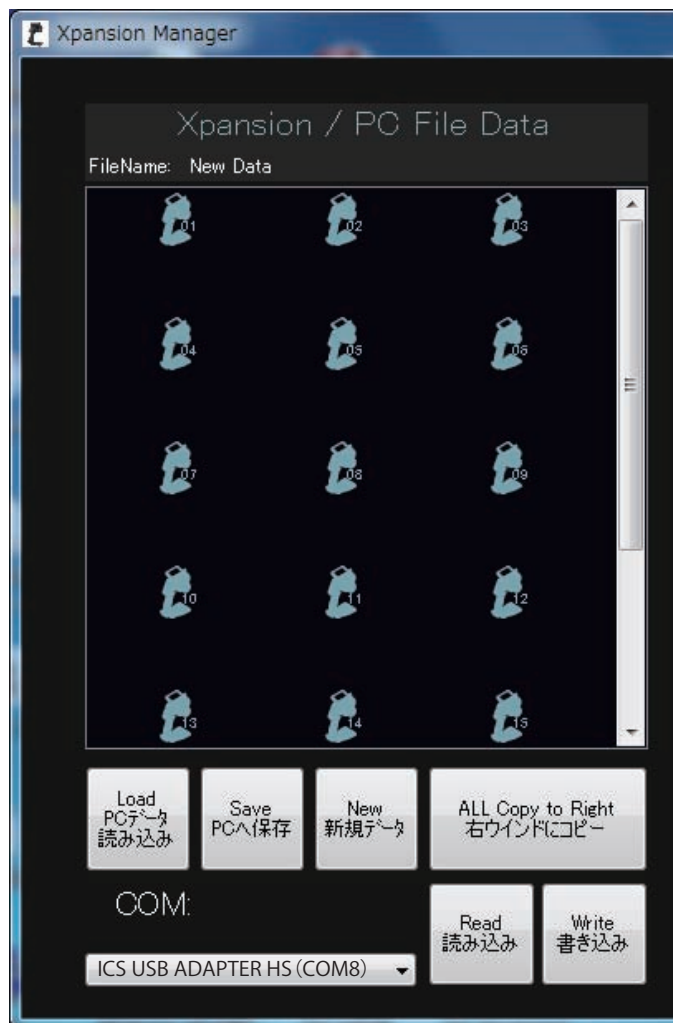
Please be careful when using this operation.

- All Copy to Right

- All Copy to Left

The Data in the window copy to another window.

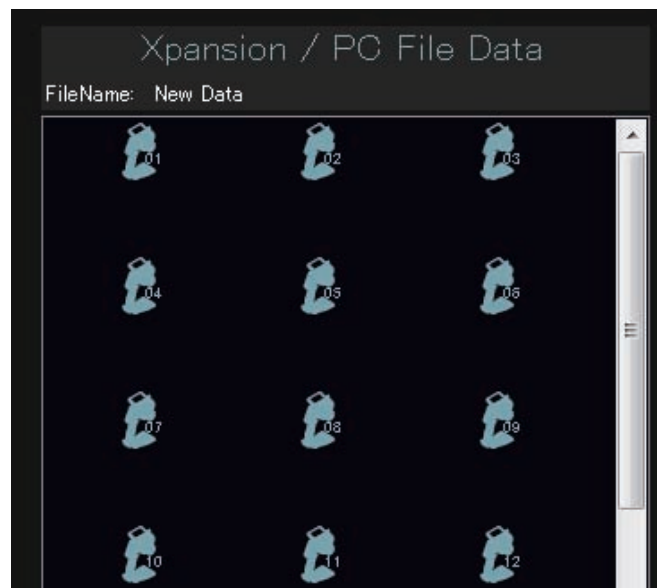
Please be careful when using this operation because data in the destination window will be changed.



Copy of model data

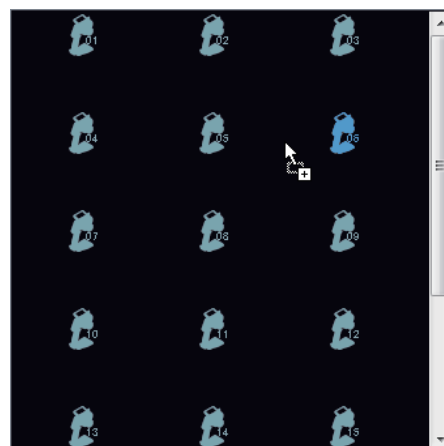
There are 20 transmitter icons in the each data window.
Each icon represents one of the model memories with reference to the model number.

If you can not see 20 icons on the screen, please operate the scroll bar on the right side.

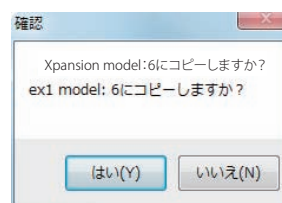


- Drag and Drop

There are two ways to copy a model.
One way is to drag and drop the icon by using your mouse.
In the picture shown to the right, left click with your mouse on Model5 and move mouse cursor to Model6 to copy the model.

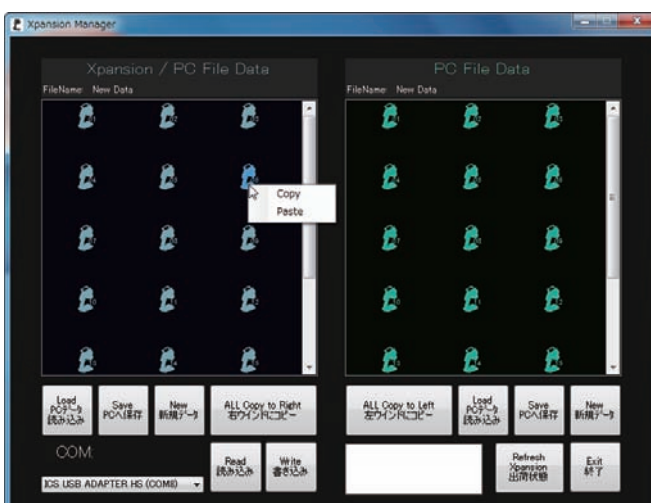


Dialog Box shown will appear when you release the mouse button.
Model copy is finished when you click the "YES" in the dialog box.



- Right click menu when using the mouse.

The other method to perform a model copy is use the menu by right clicking by the mouse.
First, the menu will appear like shown to the right when you right click on the icon of model to copy.
Please select "copy" in the menu.
Next, right click on the icon of model that you would like to copy the data to and the same menu will appear.
Please select "paste" in the menu.

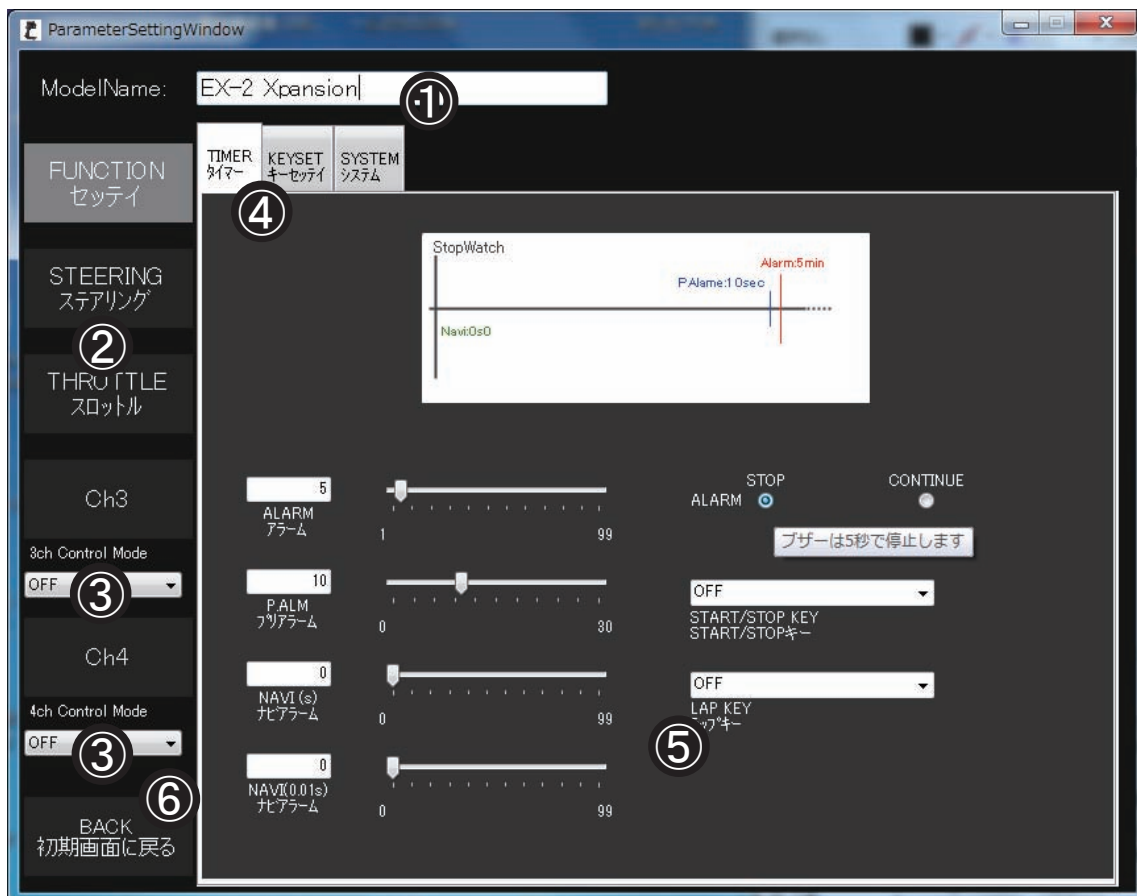


Edit of Model data

You can see and edit the data of each model memory by double clicking the model data icon in the data window.

In this picture, this is the data of timer tab in the function menu.

If you want to see other functions, please click the No.4 tab.



1/ Model name edit Box

You can edit each model name.

2/ The parameter select button

Select the function of the parameter setting screen.

3/ Control mode button

Select 3,4ch output signal mode.

The parameter configuration of Ch3/Ch4 can not be changed when the selected control mode is not set.

4/ Parameter setting tab

Select function in the parameter edit screen.

5/ Parameter setting screen

Displays the parameters which can be set when selecting the parameter selection button and parameter selection tab.

6/ BACK Button

Stops the editing of model data and the display is back to the initial screen.

